

## Data Exchange

ViziRail's Data exchange module provides an interface to all other ViziRail modules to manage the various inbound and outbound messages.

Key Data Exchange functions include:

- ❑ **Industry standard technology:** XML and other industry standards are used to simplify integration
- ❑ **Message management:** ensures that all messages are sent and will resend or report messages with errors

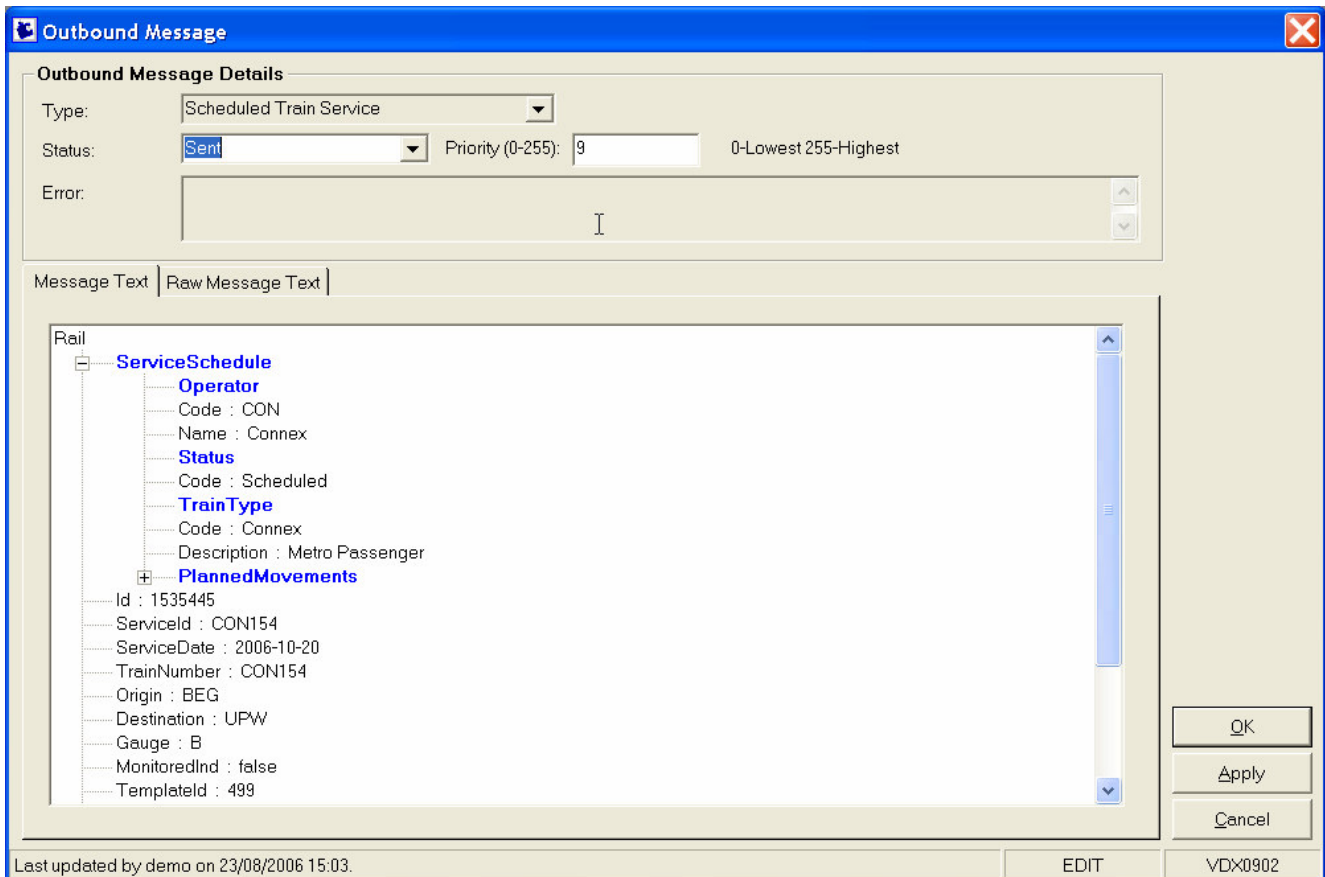


Figure 1: Inbound Message of a train service

- ❑ **Inbound messages:** ability to update ViziRail from external systems, standard interfaces include:
  - Schedules train service
  - Train Steps
  - Train Consists
  - Path Requests
- ❑ **Outbound messages:** ability to send data from ViziRail to external systems, standard interfaces include:
  - Schedules train service
  - Actual and/or ETA Updates
  - Incidents
  - Possessions
  - Speed restrictions
  - Planned consist
  - Consist
  - Vehicle kilometre statistics